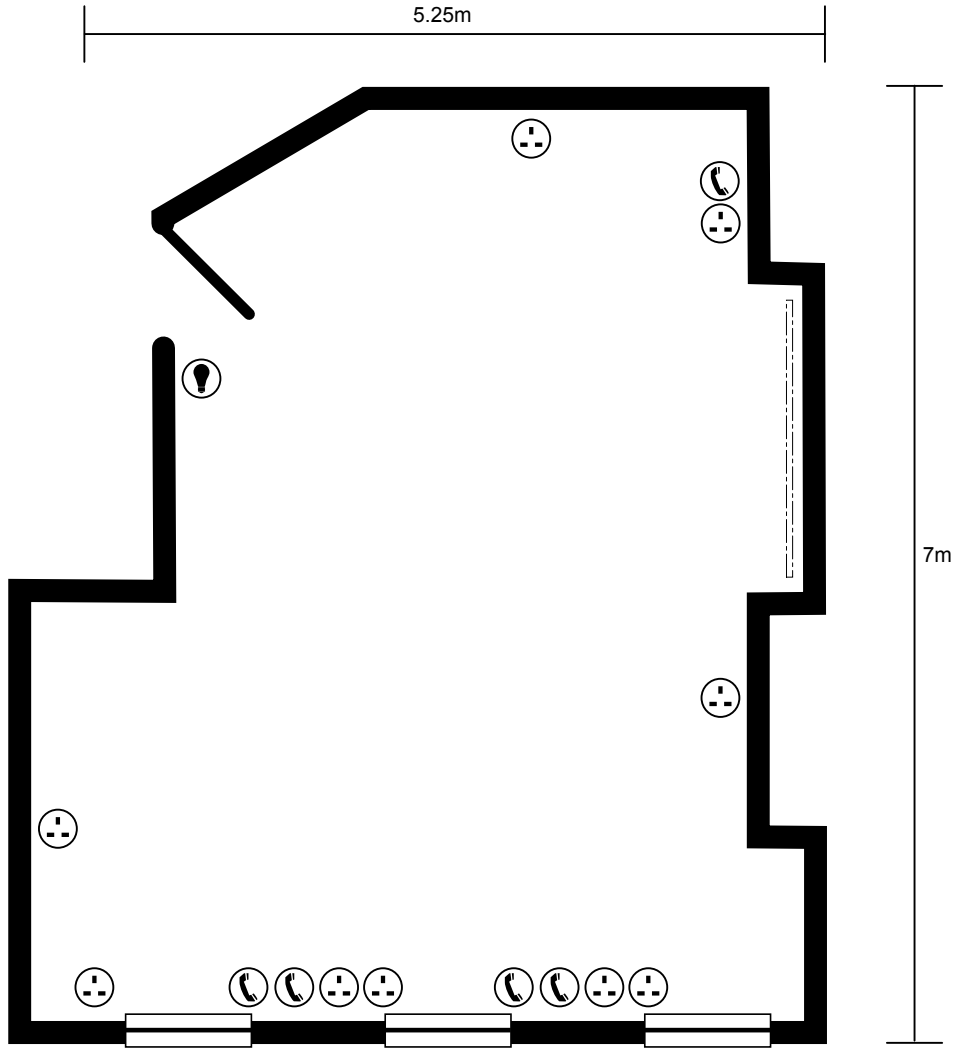


## Room 4



### Key:

- |   |  |
|---|--|
|  Telephone points                |  Light switch         |
|  Power points (2 sockets)        |  Broadband connection |
|  Power points (multiple sockets) |  Microphone socket    |
|   |  Fire exit            |

## Room 4



### Room layout capacities

Theatre	35
Classroom	14
Boardroom	20
Dinner dance	n/a
Banquet	n/a
Cabaret	n/a
Reception	n/a
U-shape	14
Exhibition	n/a

### Technical specification

Length	7m
Width	5.25m
Ceiling height	5m
Sq m	37m
Natural daylight	Yes
Blackout	Yes
Air cond	No
Phone	Yes
ISDN	No
Internet	Yes
Access level	Two
Wheelchair access	No
*some steps	