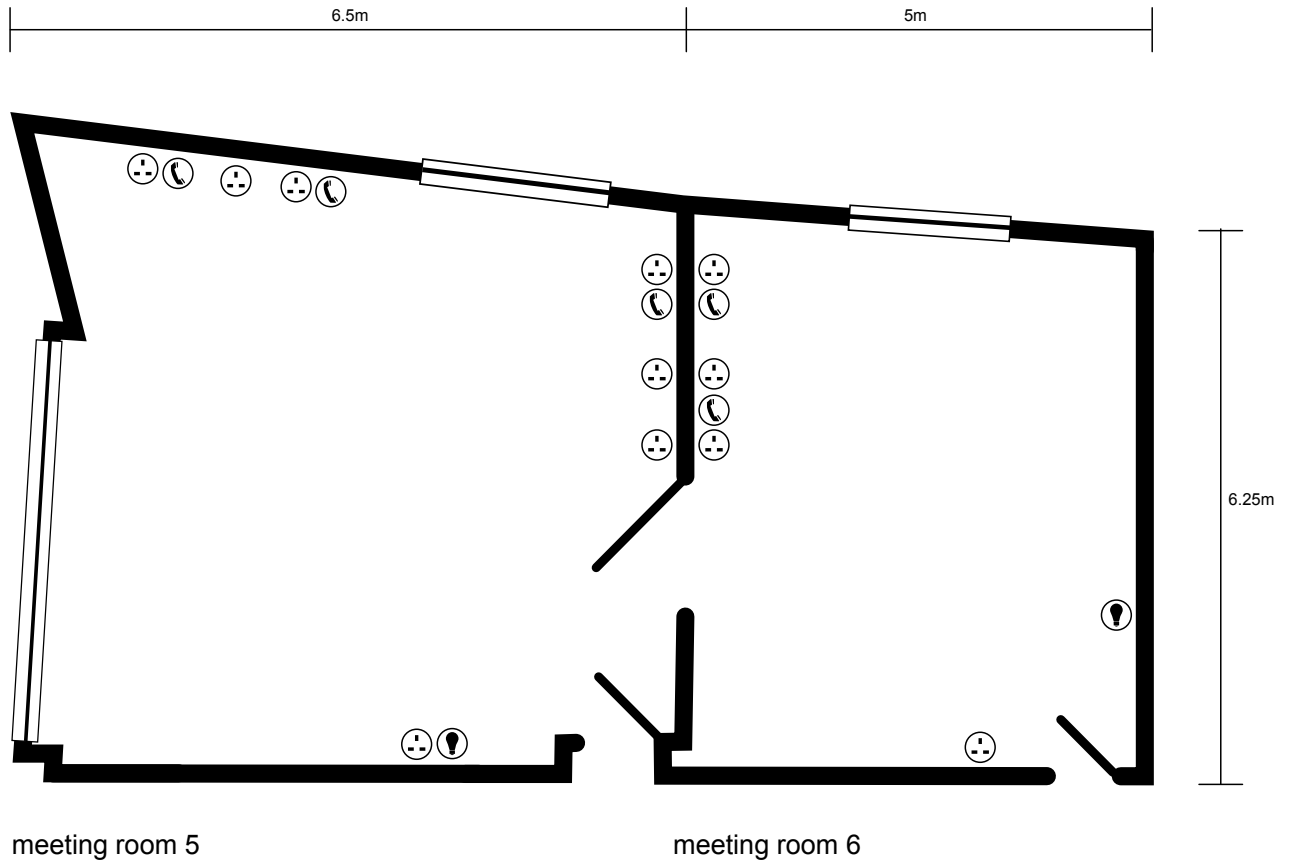









Rooms 5 and 6



Key:

-  Telephone points
-  Power points (2 sockets)
-  Power points (multiple sockets)

-  Light switch
-  Broadband connection
-  Microphone socket
-  Fire exit



Conference Culture



Room 5 layout capacities

Theatre	28
Classroom	14
Boardroom	16
Dinner dance	n/a
Banquet	n/a
Cabaret	n/a
Reception	n/a
U-shape	16
Exhibition	n/a

Room 6 layout capacities

Theatre	18
Classroom	n/a
Boardroom	12
Dinner dance	n/a
Banquet	n/a
Cabaret	n/a
Reception	n/a
U-shape	n/a
Exhibition	n/a

Room 5 Technical specification

Length	6.5m
Width	7m
Ceiling height	2.3m
Sq m	45.5m
Natural daylight	Yes
Blackout	Yes
Air cond	Yes
Phone	Yes
ISDN	No
Internet	Yes
Access level	Three
Wheelchair access	Yes

Room 6 Technical specification

Length	6.25m
Width	5m
Ceiling height	2.8m
Sq m	31m
Natural daylight	Yes
Blackout	Yes
Air cond	Yes
Phone	Yes
ISDN	No
Internet	Yes
Access level	Three
Wheelchair access	Yes