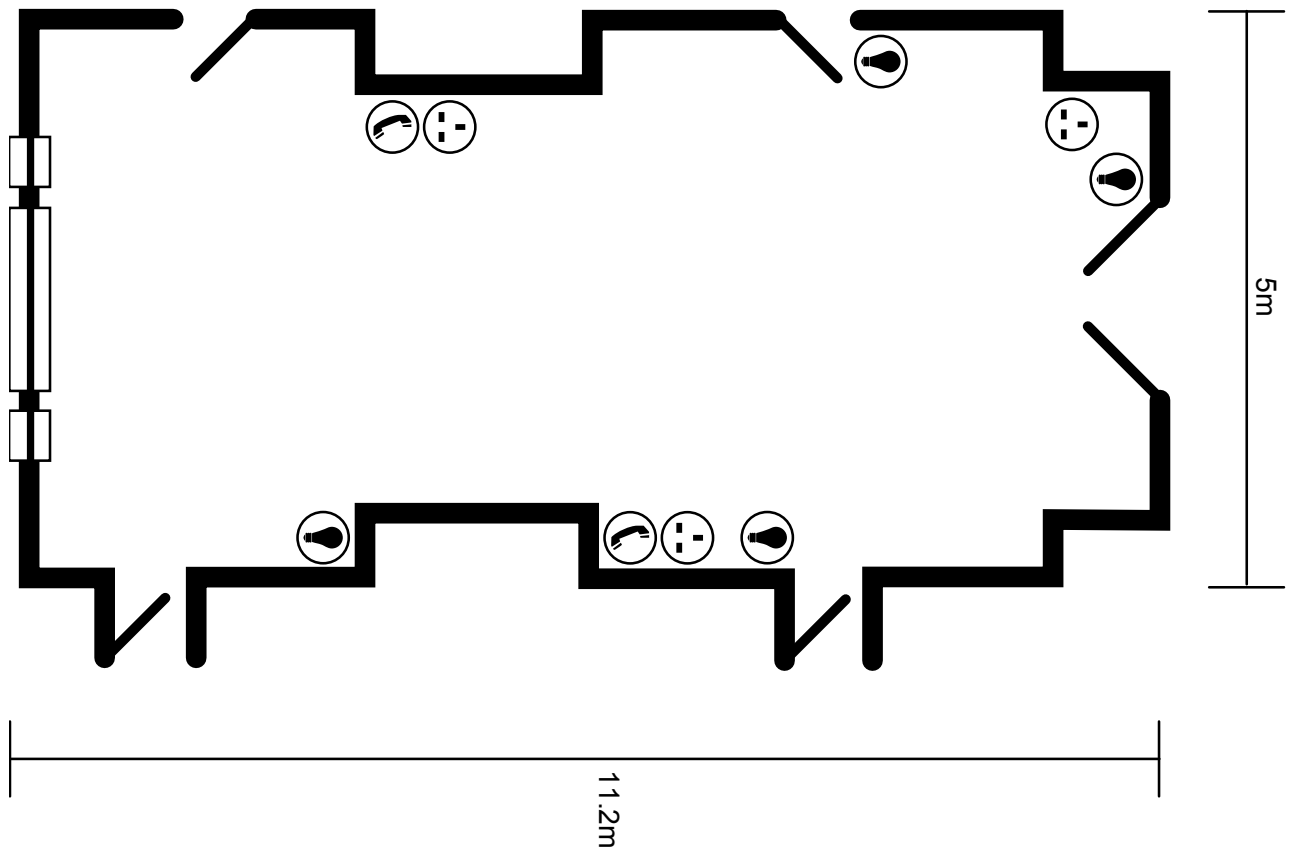









## Grimshaw Room



### Key:

-  Telephone points
-  Power points (2 sockets)
-  Power points (multiple sockets)

-  Light switch
-  Broadband connection
-  Microphone socket
-  Fire exit

## Grimshaw Room



### Room layout capacities

Theatre	40
Classroom	20
Boardroom	25
Dinner dance	n/a
Banquet	n/a
Cabaret	30
Reception	60
U-shape	20
Exhibition	n/a

### Technical specification

Length	11.2m
Width	5m
Ceiling height	3.5m
Sq m	56m
Natural daylight	Partial
Blackout	No
Air cond	No
Phone	No
ISDN	No
Internet	No
Access level	First
Wheelchair access	Yes