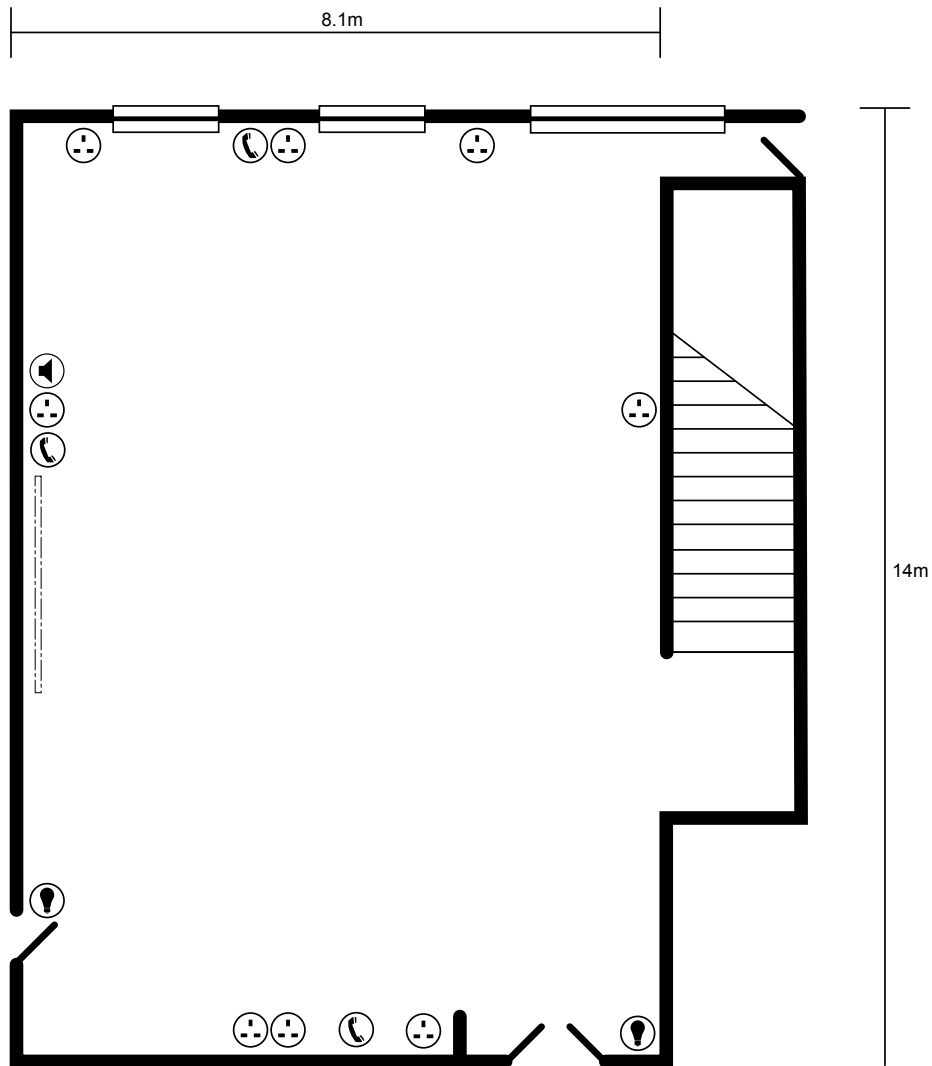









Sullivan Room



Key:

-  Telephone points
-  Power points (2 sockets)
-  Power points (multiple sockets)

-  Light switch
-  Broadband connection
-  Microphone socket
-  Fire exit

Sullivan Room



Room layout capacities

Theatre	120
Classroom	40
Boardroom	40
Dinner dance	n/a
Banquet	n/a
Cabaret	100
Reception	100
U-shape	30
Exhibition	113sq m

Technical specification

Length	14m
Width	8.1m
Ceiling height	6.4m
Sq m	113.4m
Natural daylight	Yes
Blackout	No
Air cond	No
Phone	Yes
ISDN	No
Internet	Yes
Access level	Ground
Wheelchair access	Yes