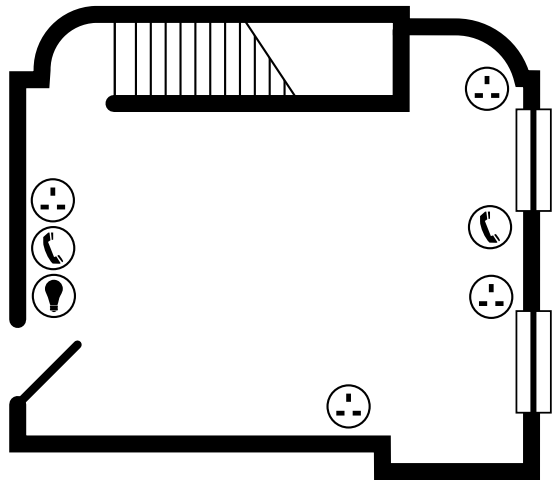
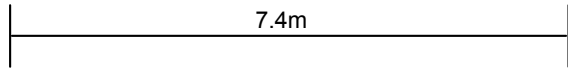
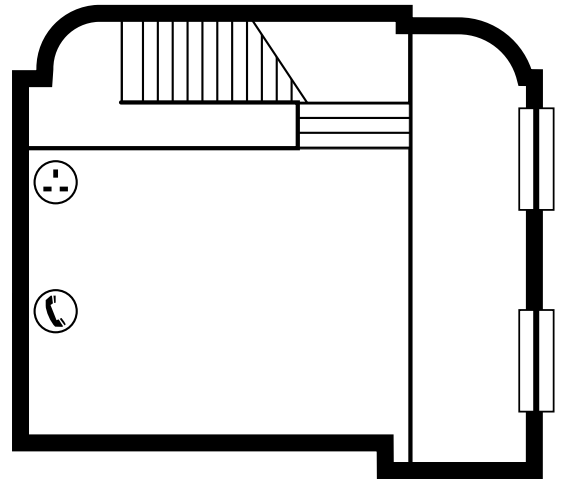
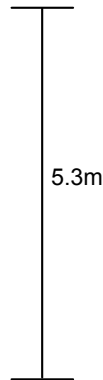


Walton Room










walton (downstairs)



walton (upstairs)

Key:

-  Telephone points
-  Power points (2 sockets)
-  Power points (multiple sockets)

-  Light switch
-  Broadband connection
-  Microphone socket
-  Fire exit

Walton Room

Room layout capacities

Theatre	25
Classroom	12
Boardroom	20
Dinner dance	n/a
Banquet	n/a
Cabaret	20
Reception	n/a
U-shape	12
Exhibition	n/a

Technical specification

Length	7.4m
Width	5.3m
Ceiling height	2.6m
Sq m	39.2m
Natural daylight	Yes
Blackout	No
Air cond	No
Phone	Yes
ISDN	No
Internet	Yes
Access level	Ground
Wheelchair access	Yes