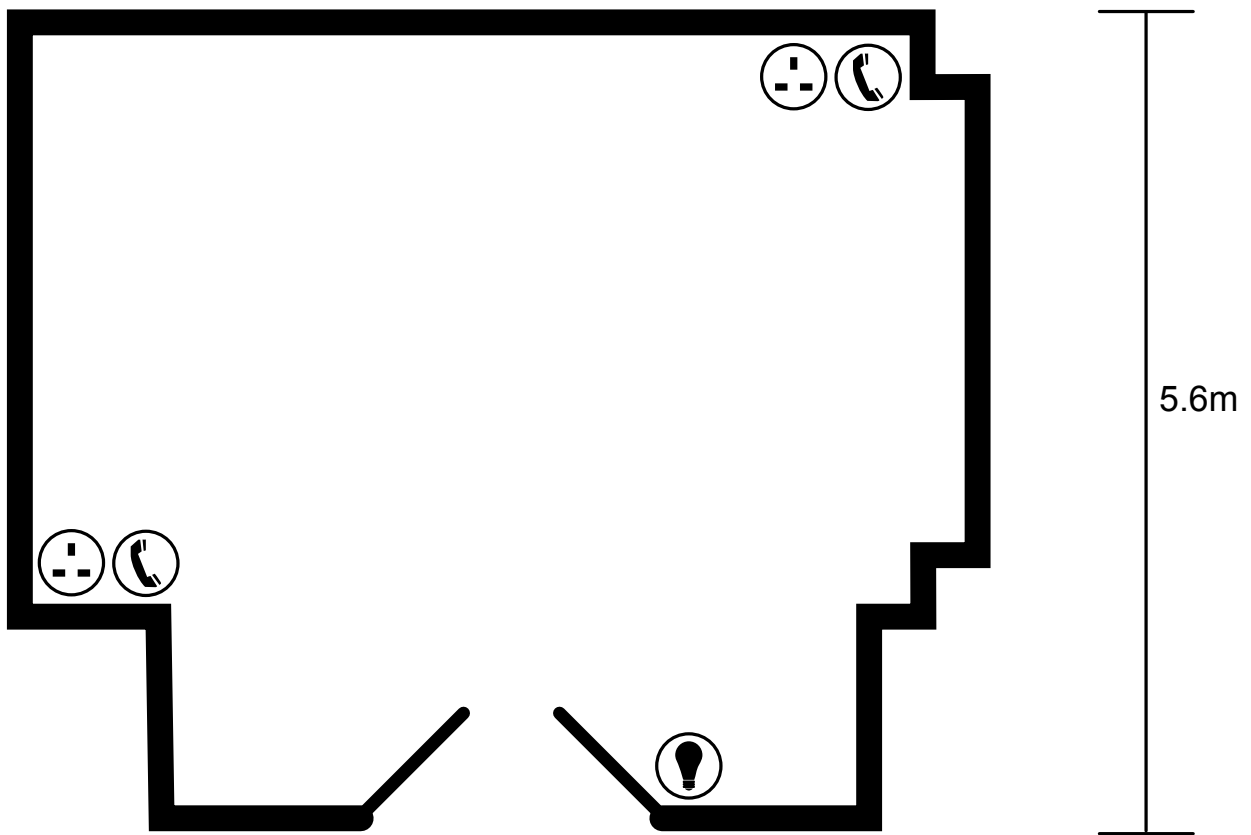
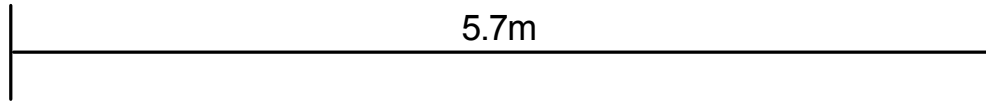









Waterman Room



Key:

-  Telephone points
-  Power points (2 sockets)
-  Power points (multiple sockets)

-  Light switch
-  Broadband connection
-  Microphone socket
-  Fire exit

Waterman Room



Room layout capacities

Theatre	20
Classroom	12
Boardroom	16
Dinner dance	n/a
Banquet	n/a
Cabaret	20
Reception	25
U-shape	12
Exhibition	n/a

Technical specification

Length	6.5m
Width	5.6m
Ceiling height	3.4m
Sq m	36.4m
Natural daylight	No
Blackout	Yes
Air cond	No
Phone	No
ISDN	No
Internet	Yno
Access level	First
Wheelchair access	Yes